

Stanford's 2022 PNT Symposium - 'R4' - Student Presentations

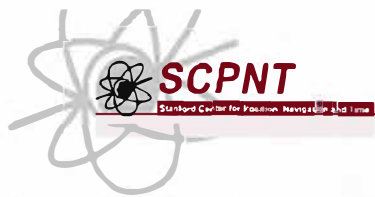
Wednesday October 12th - Kavli Auditorium, SLAC

Day / Date	~ Start Time	~mins w/ Q&A	Invited Speaker	Affiliation	Title of Presentation
<i>Wed 10/12/22</i>	<i>8:45am</i>	<i>15</i>	<i>Reception & Coffee Service at SLAC's Kavli Auditorium Lobby</i>		
1	9:00am	30	Yunhan Qi	Tsinghua University	Unlocking the Ultra-high-precision Processing Mode of BDS-3 B1 Signals
2	9:30am	30	Christopher Flood	University of Colorado	A Multi-Platform Clock Ensemble Testbed
3	10:00am	30	Matt McDermott	Tufts University	3D formulation of the Iterative Closest Ellipsoidal Transform (ICET)
	10:30am	15	<i>Morning Break</i>		
3	10:45am	30	Ben Gattis	University of Colorado	Building a Network/Data Management for Low Cost GNSS Monitors
4	11:15am	30	Thomas Gruber	Auburn University	Unique Challenges and Opportunities of Vehicle Navigation in Autonomous Racing
5	11:45am	30	Anderson Givhan	Auburn University	Comparison of CRPA Direction of Arrival methods on Post Correlated GNSS signals for Solution Authentication/Spoofing Detection
	12:15pm	60	<i>Lunch at Building 53 Cafeteria</i>		
6	1:15pm	30	Myles Clark	University of Florida	Space-to-space time-transfer (CSAC clock recovery) and precision ranging via laser links for the NASA/MIT/UF CLICK CubeSat mission
7	1:45pm	30	Adyasha Mohanty	Stanford University	Learning GNSS Positioning Corrections for Smartphones using Graph Convolution Neural Networks
8	2:15pm	30	Daniel Neamati	Stanford University	Set-Based Ambiguity Reduction in Shadow Matching with Iterative GNSS Pseudoranges
	2:45pm	15	<i>Afternoon Break</i>		
9	3:00pm	30	Wen-Chiao Chen	National Cheng Kung University	Developing a Star Tracker Algorithm for Small Satellites
10	3:30pm	30	Tim Dittmann	University of Colorado	Supervised Machine Learning of High Rate GNSS Velocities for Earthquake Strong Motion Signals
11	4:00pm	30	Somrita Banerjee	Stanford University	Adapting to Distribution Shifts in Satellite Pose Estimation
	4:30pm	-	<i>Wrap Up Discussion & End of SCPNT Symposium Day 1</i>		

Stanford's 2022 PNT Symposium - Invited Speakers & Banquet Version 'R4'

October 12th & 13th- *Kavli Auditorium, SLAC & Stanford Faculty Club*

	~ Start Time	~mins	Invited Speaker	Affiliation	Title of Presentation
<i>Thurs 10/13/22</i>	<i>8:30am</i>	<i>30</i>	<i>Reception & Coffee Service at SLAC's Kavli Auditorium Lobby</i>		
1	9:00am	15	Walter, Todd & Lo, Sherman	Stanford University	Welome Comments & Announcements
2	9:15am	45	Parkinson, Brad	Stanford University, Emeritus	PNT Challenges
3	10:00am	30	Gerein, Neil	Hexagon	Protecting your Position Solution
	<i>10:30am</i>	<i>30</i>	<i>Morning Break</i>		
4	11:00am	30	Fernandez-Hernandez, Ignacio	European Commission	Authentication and other new services on Galileo
5	11:30am	30	Sinclair, Laura	NIST	Optical Frequency Comb-based Time Transfer Over Long Distance Terrestrial Links
6	12:00pm	30	Hagstrum, Jonathan	USGS	Avian Navigation
	<i>12:30pm</i>	<i>60</i>	<i>Lunch at Building 53 Cafeteria</i>		
7	1:30pm	30	Gao, Grace	Stanford University	Lunar Satellite Navigation System
8	2:00pm	30	Anderson, Kevin	University of Maryland, College Park	Novel Methods of Spacecraft Navigation using X-ray Pulsars
9	2:30pm	30	Sakovsky, Maria	Stanford University	Deploying Large Space Structures
	<i>3:00pm</i>	<i>30</i>	<i>Afternoon Break</i>		
10	3:30pm	30	Young, Brent	AOSense	Quantum Atomic Navigation & Mapping
11	4:00pm	30	Morton, Jade	Univ. of Colorado	21st Century PNT, Tribute to Pat Doherty
	4:30pm		<i>Conclusion of Symposium Talks</i>		
<i>Thurs 10/13/22</i>	<i>6:00pm</i>	<i>90</i>	<i>Reception and Banquet Dinner on campus at Stanford's Faculty Club</i>		
1	7:30pm	30	Parkinson, Brad	Stanford University, Emeritus	Terra isn't Firma



Stanford's PNT Symposium

October 12th & 13th, 2022

SLAC Entry Gate requires simple ID
SU Student ID, Passport, Driver's Lic

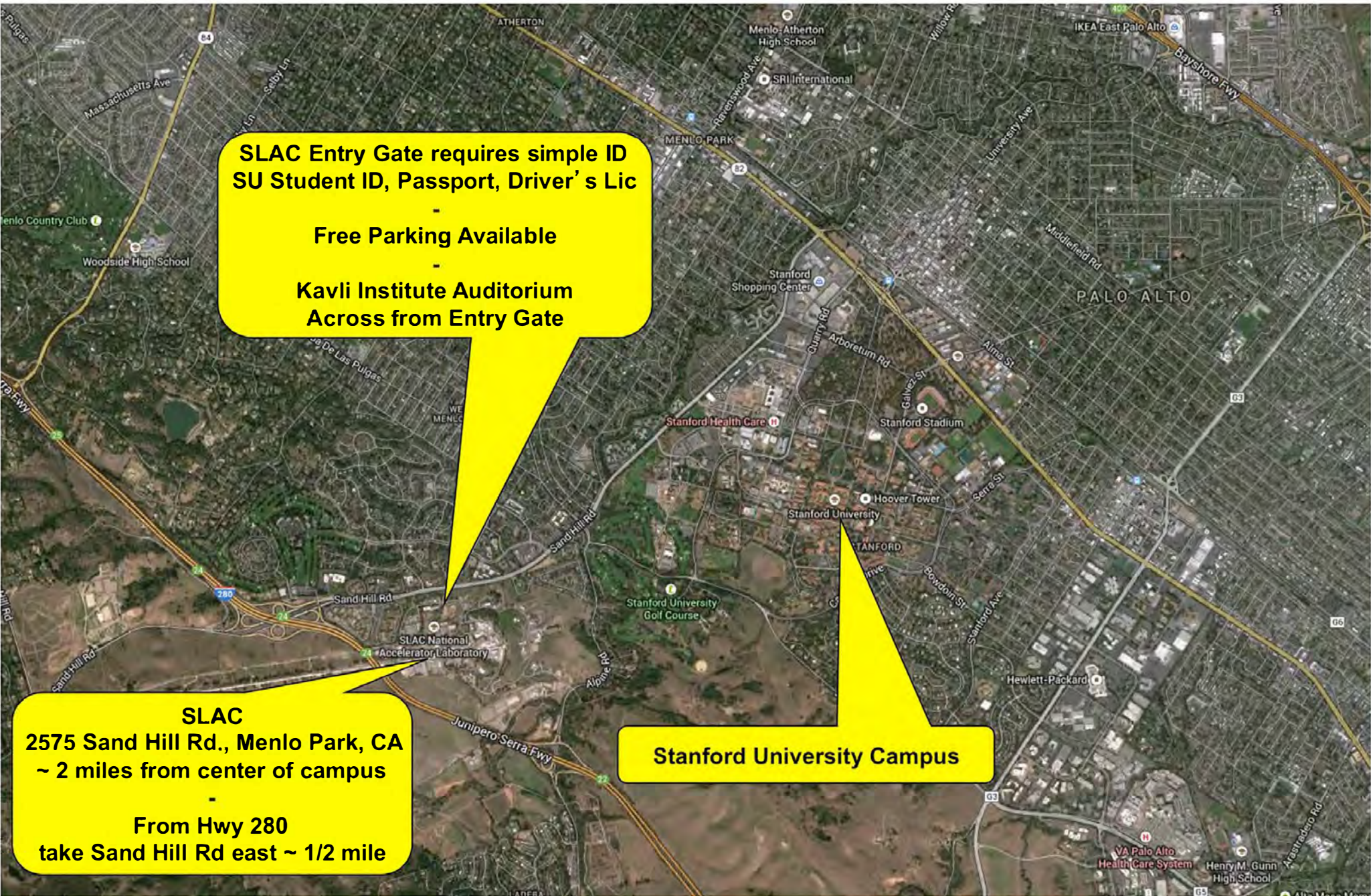
Free Parking Available

Kavli Institute Auditorium
Across from Entry Gate

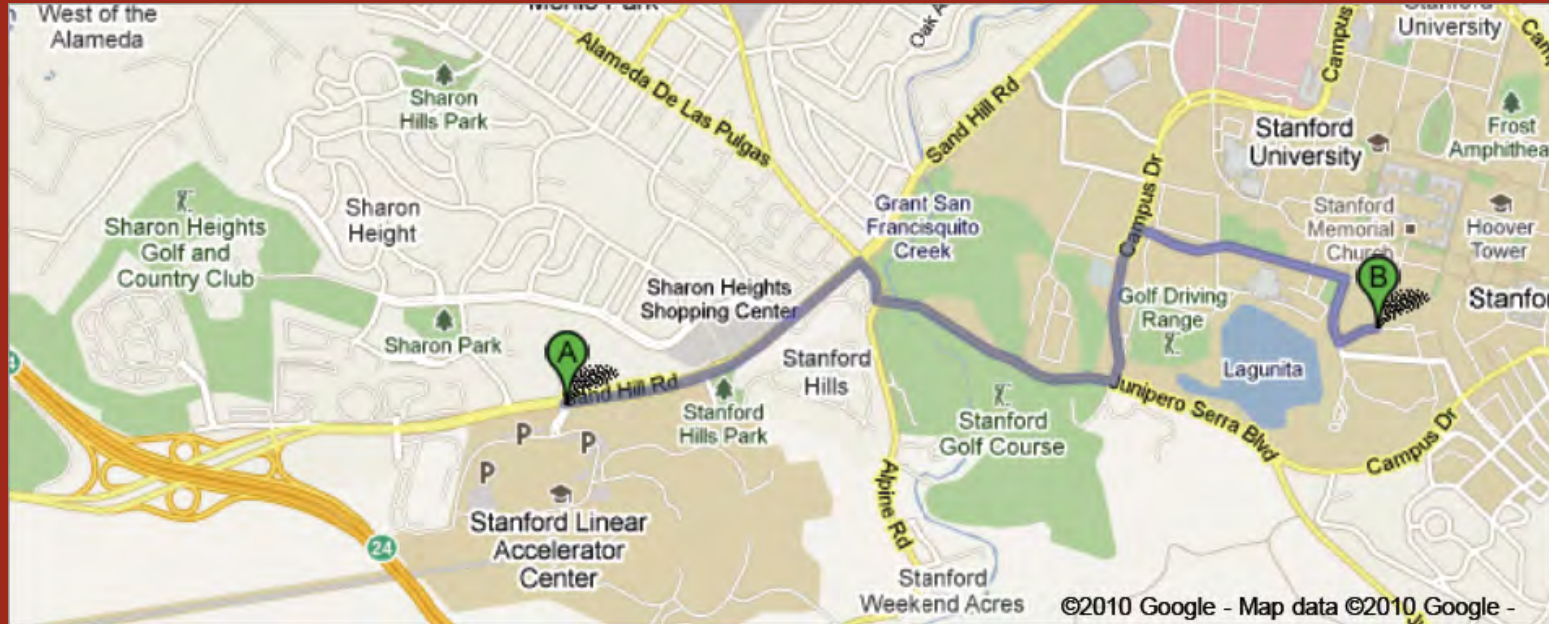
SLAC
2575 Sand Hill Rd., Menlo Park, CA
~ 2 miles from center of campus

From Hwy 280
take Sand Hill Rd east ~ 1/2 mile

Stanford University Campus



Directions from SLAC to Faculty Club



A Loop Rd

1. Head east on Loop Rd
Restricted usage road
2. Turn left toward Sand Hill Rd
Partial restricted usage road
3. Turn right onto Sand Hill Rd
4. Turn right onto Santa Cruz Ave
5. Take the 1st left onto G5/Junipero Serra Blvd
6. Turn left onto Campus Drive
7. Turn right onto Santa Teresa St
8. Turn right onto Lomita Dr
9. Turn left onto Lagunita Dr
Destination will be on the left

B Stanford Faculty Club

439 Lagunita Drive
Stanford, CA 94305